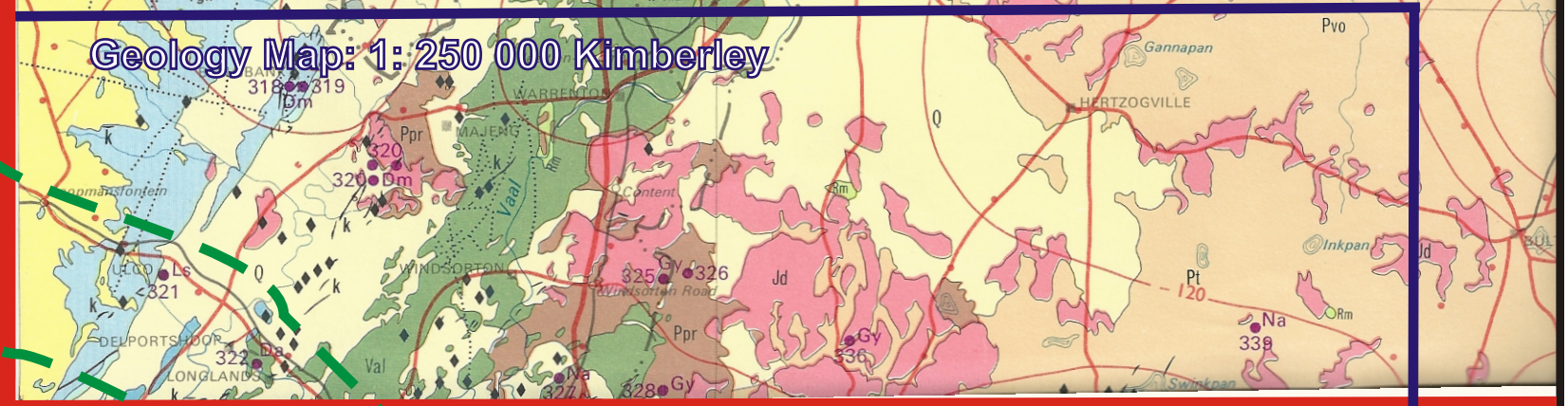
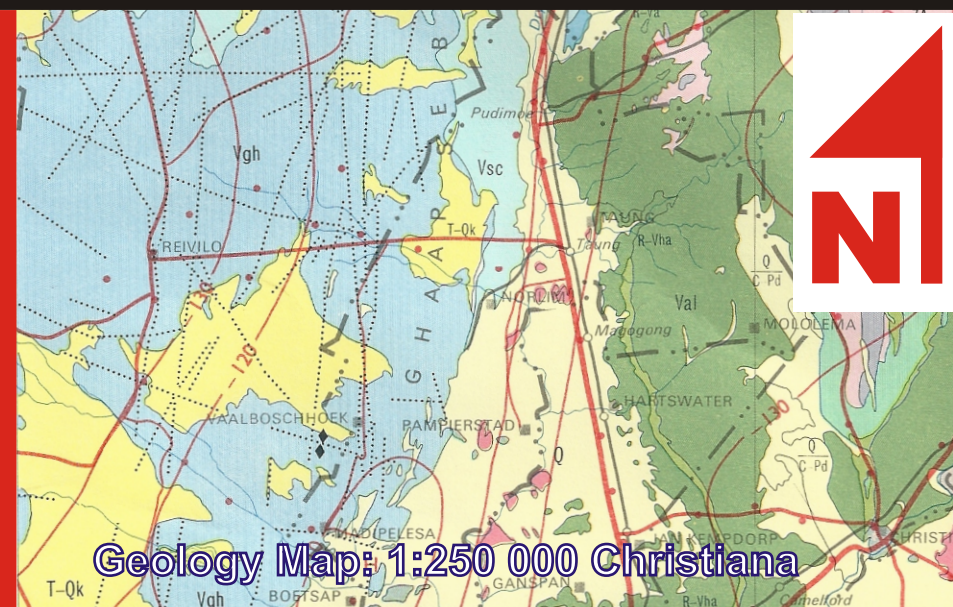
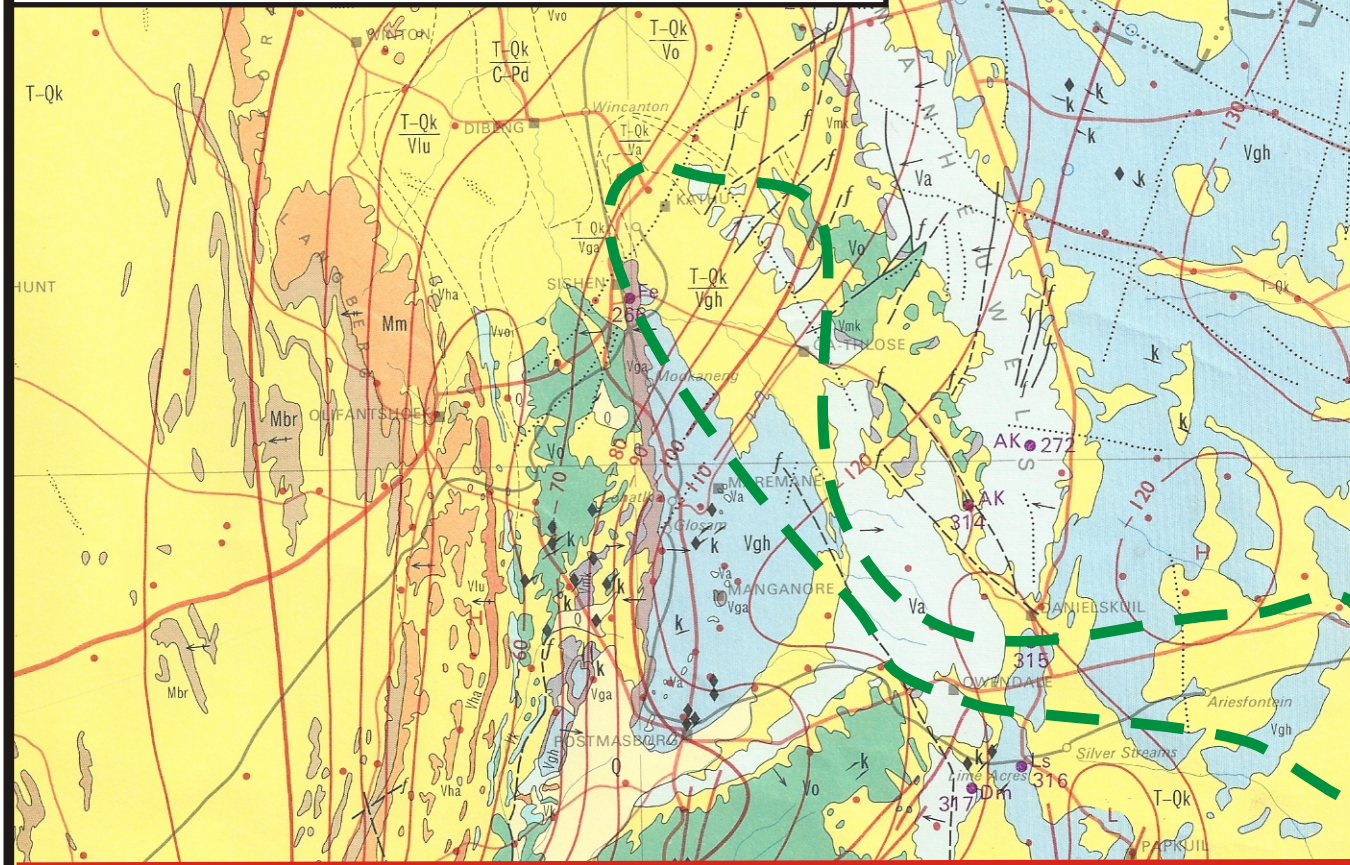


Figure 3: ESKOM: Dealesville - Kimberley - Kathu Boundary to Ulco Substation
 Geology Map: Scanned 1:1 000 000



Report by:

GEOSET cc
 CK 99/65610/23
 RAADGEWENDE INGENIEURS- EN OMGEWINGSGEOLOOE
 CONSULTING ENGINEERING AND ENVIRONMENTAL GEOLOGISTS

POSBUS/PO BOX 60995 TEL/FAX: (+2712)(0)12 525 1004
 KARENPAK 0118 CELL: (+2782)(0)82 925 4075
 WEBFAX: 086 658 3190 e-mail: davidsvdm@webmail.co.za

Ingenieursgeoloog **David S. van der Merwe**
 Engineering Geologist Bsc.(Hons.)(Eng. Geol.), Pr.Sci.Nat.; MSAIEG; MEESG

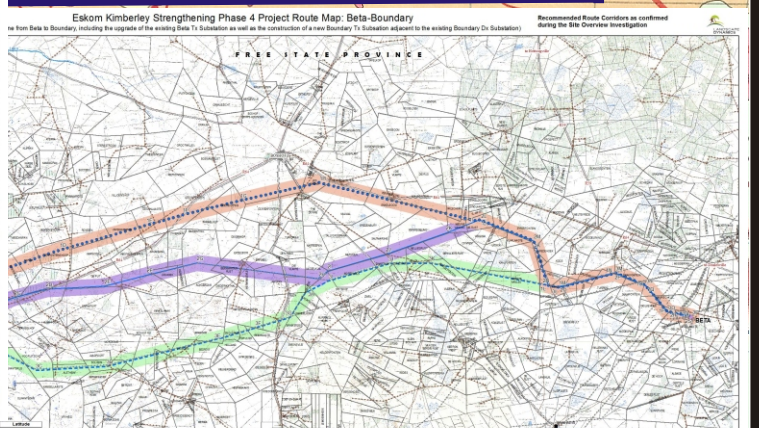
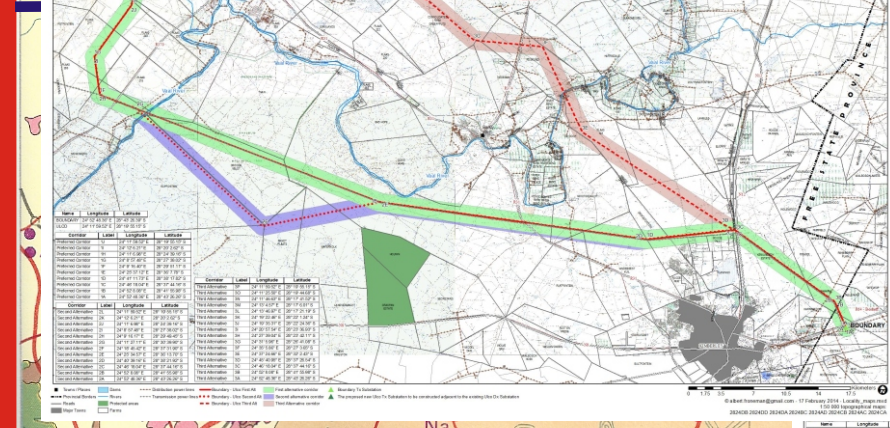
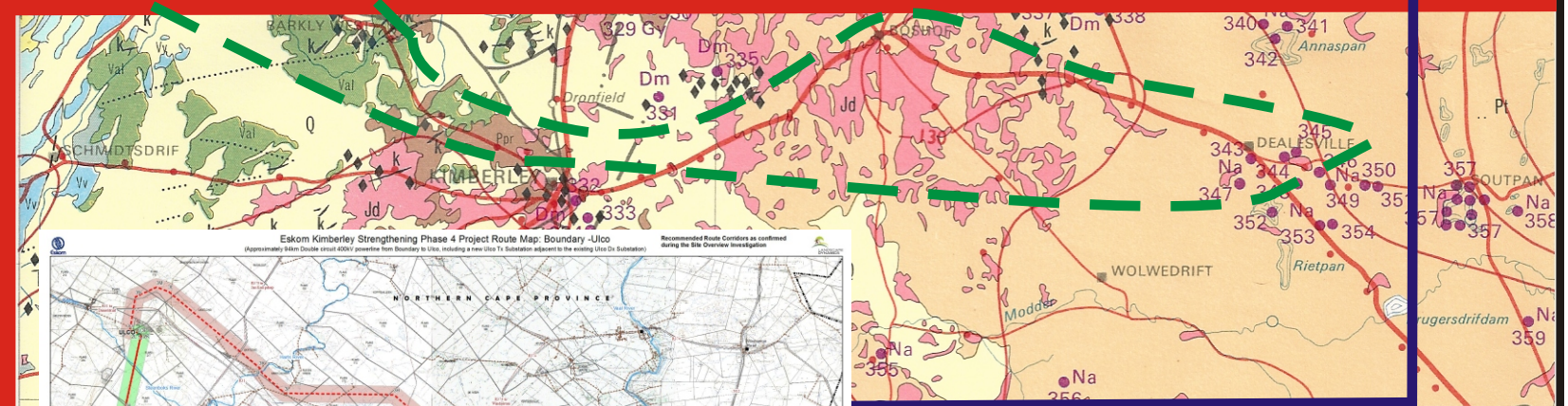
Legend:

- Border of study area
- Inferred zone boundary

Geology Map: 1: 1 000 000

Legend

- Qc/Qk Calcrete calcified pandune & surface limestone: Quaternary
- Jd Dolerite
- Pt Shale siltstone sandstone: Tierberg Formation, Ecca Group, Karoo Supergroup
- Ppr Shale: Prince Albert Formation, Ecca Group, Karoo Supergroup
- V Dolomite, chert & limestone: Campbell Group, Griqualand West Sequence
- Rg/Val Andesitic lava: Platberg Group, Ventersdorp Supergroup



ENGINEERING GEOLOGICAL SURVEY:
 As shown on plan and described in report
 Engineering Geological Investigation to determine the potential for the upgrading of Power lines from Dealesville to Kuruman.
 REPORT NUMBER: GS201403KBU DATED: March 2014